

PRES PRESS

SPRING BRANCH Presbyterian Church

1215 Campbell Rd. · Houston, TX 77055

713-464-7659



February
2020

Dear members and friends,

A week ago now, two people were killed in an explosion at Watson Grinding and Manufacturing, on the north side of the Spring Branch area. While this is certainly tragic, many more were injured, and the latest estimate is that, just north of us, at least 450 families are now homeless. That number will likely go higher.

Our ministry partner, Memorial Area Ministries (MAM), says it needs \$300,000 in aid to take care of our neighbors. They have asked member churches to raise funds. So, in response, the Session of your church approved a fundraising concert and barbecue to be held this coming Wednesday. So far, performers who have responded to the invitation include such local favorites as: Ed Amash, Ken Gaines, Frank Martin Gilligan, Brian J Kalinec, Raymond Wyatt, and Jim Gill. More are still being added. This is going to be a great concert.

The barbecue will take place at our normal Wednesday Night Supper time, 6:00 p.m. and the concert begins at 7:00.

Spring Branch has always had a reputation of reaching out generously. I am praying that this event will be no exception. But for that to happen, we need YOUR help. Can you help, serve food, usher, help at the barbecue pit, direct parking, collect the offerings, help with setup and takedown, or any other way you might wish to be involved? If so, please call the church office at 713-464-7659.

Most importantly, the main thing that will make this a success will be YOUR presence, and the presence of your friends whom you invite. We have had a very short time to prepare. So would you please help us get the word out? Would you please encourage your neighbors, co-workers, and anyone else you know, to come out for this even to unite the community in reaching out to these victims?

Thank you in advance for your help!

In Christ's Service,
Kevin Boyd, Pastor

Missions of the Month

The “Mission of the Month” for February is the Souper Bowl of Caring. The Souper Bowl of Caring is a youth-inspired, youth-led movement, working with other groups across the nation including: schools, churches, local businesses, corporations, passionate individuals and NFL teams to tackle hunger in their local communities during the weeks leading up to the biggest celebration in football, the Super Bowl. We will be collecting cash, soup, and other canned goods to contribute on Sunday, February 2nd.

This program was started by a youth group at Spring Valley Presbyterian Church in Columbia, SC in 1990 after a simple prayer by that church’s pastor: “**Lord, as we enjoy the Super Bowl football game, help us be mindful of those who are without a bowl of soup to eat.**”

In addition to the funds collected at our church, the Souper Bowl of Caring has corporate partners like HEB and Kroger that also contribute. They work with the Houston Food Bank and local hunger relief charities in over 18 counties in South Texas. 100% of all Souper Bowl of Caring donations benefit local hunger-relief charities.

Did you know?

We invite everyone to wear their favorite football team’s shirt to church on February 2.

- 48 million Americans live in poverty
- 1 in 7 Americans face hunger every day
- More than 630,000 people in the United States are homeless
- 23% of those struggling went to college
- Or that 16 million children live in food insecure households

Jesus’ words: “I was hungry and you gave me food, thirsty and you gave me drink... whenever you did this for one of the least of these followers of mine, you did it for me!”



February Mission Updates & Opportunities

SBPC Hot Meals on Weekends – The 4th Saturday of each month we look for individuals to deliver meals to shut-ins. We have 2 routes with about 14 people on each route, so we usually need a total of 4 volunteers each month. Please contact Lu Taylor if you are interested in volunteering to deliver meals one month. The Saturday for this month will be February 22nd.

PCHAS Christmas Ornaments – Thanks to everyone who purchased / donated to the Presbyterian Children’s Home and Services Angel Tree Christmas Ornament Drive. This year we raised \$805!

Baker Ripley Event – On Saturday, February 8th, BakerRipley and SBPC will be hosting a workshop entitled “Planning for Future”. The workshop is primarily for caregivers and will address stress management techniques, preparing legal and financial documents and ways your faith community can help in the next phase of life. The workshop will be at the church from 9:00 – 1:00.

Scout Sunday – Save the Date for our Annual Scout Sunday Service on Sunday, February 16th. Scouts and their families will attend and help lead our worship service that morning.

YOU ARE INVITED

TO HELP THE VICTIMS OF THE WATSON BUILDING EXPLOSION



A Concert to Care for Our Spring Branch Neighbors

Wednesday, February 5th

6:00pm BBQ Dinner

7:00pm Benefit Concert

Spring Branch Presbyterian Church

1215 Campbell Rd Houston, TX 77055

SBPC is hosting a Benefit Concert to support families devastated by the recent explosion in the Spring Branch area. The concert is co-sponsored by the [Memorial Assistance Ministries](#).

The BBQ starts at 6:00 p.m. followed by the Concert from 7:00 p.m.—9:00 p.m.

All donations and proceeds will benefit those affected by the explosion.

The Concert will feature: SBPC Pastor, Dr. Kevin Boyd, Jim Gill, Barry Wilson, Ed Amish, Ken Gaines, Frank Martin Gilligan, Brian J. Kalinec, Raymond Wyatt, and the list of performers is still growing!



SPRING BRANCH
Presbyterian Church





CAREGIVING: PLANNING FOR THE FUTURE

This free workshop hosted by BakerRipley and Spring Branch Presbyterian Church will discuss stress management techniques, the basics of preparing legal and financial documents and ways your faith community can help in the next phase of life.

**SATURDAY, FEBRUARY 8TH
9:00AM-1:00PM**

**SPRING BRANCH PRESBYTERIAN CHURCH
1215 CAMPBELL ROAD HOUSTON, TX 77055**

**REGISTER: CAREGIVER@BAKERRIPLEY.ORG
MORE INFORMATION: 713-685-6577**

THE EVENT IS FREE BUT REGISTRATION IS ENCOURAGED.

Presented By:

BakerRipley
Community Developers



SPRING BRANCH
Presbyterian Church

Community Partners:

Alzheimer's Association

Specialized Telecommunications Assistance Program

Social Security Administration

Harris County Area Agency on Aging



This Month at SBPC

Happy
Valentine's Day

Join us for Food and Fellowship!

February 5 — BBQ

All Proceeds benefit the Watson Facility Explosion Victims

February 12 — Tacos

February 19 — Chili Cook-Off

February 26 — Red Beans & Rice with Sausage

Ash Wednesday Service



PW at a Glance

UNWIND CIRCLE meets 2/3 at 6:00 p.m.

PW BIBLE MODERATORS meet 2/5 at 9:30 a.m. in the Conference Room.

PW BOARD meets 2/5 at 10:15 a.m. in Conference Room.

PW CIRCLE meets 2/12 at 9:30 a.m. at Sarah Dikeman's House (11414 S Chestwood).

ZIP Trip on 2/19 will be a Mission Lunch Gathering. We will gather in the Fellowship Hall at 9:30 a.m. for coffee and refreshments before our TBA mission project.

We will go out to lunch afterwards.

THE HORIZONS BIBLE study using **ZOOM** will be on Tuesday 2/18, at 8:00 p.m.

View Lesson 6 at: springbranchpres.org/adult-education/presbyterian-women/

love-carved-in-stone/

HAPPY HANDS meets 2/26 at 9:30 a.m. in the Conference Room.

PW DIRECTORIES are available in the Church Office.

Bible Study Using Zoom: February 18 at 8:00 p.m.

Lesson 6 of *Love Carved in Stone* will be discussed by the group of women using Zoom on Tuesday, February 18th, at 8 p.m. All SBPC women are welcomed in this Bible study group through videoconference! Contact Carol Davis at caroldavis@entouch.net to receive the Zoom invitation to join the meeting. Watch the author's overview of this lesson on the SBPC website, and study books are available at \$10 each in the church office.



Sunday Craft Workshop
Easy Flower Arranging
Join us to make a
Valentine Floral Arrangement
Sunday, Feb. 9 1-3 PM



This month we will be learning about making arrangements with fresh flowers. This is a beginner-level workshop for all. Everyone will go home with a valentine mug arrangement. You are welcome to bring your own mug, but I will have enough for one for each person to choose from. I have been gathering some from the local re-sale shops, but you might be able to find some. Also, if you have floral scissors or snips, bring them. All other supplies will be provided but you are welcome to bring anything else you would like to use. Cost will be \$6.00 per person. Call Kay Craig at 713-467-7932 or 713-248-4138 or email to kay@craig-heidt.com

We need an idea for April! It looks like March will be led by Emily Mitchell. She will be teaching us how to write using the current popular calligraphy style. We are hoping to have monthly craft workshops so send me your ideas for future craft projects. NOTE: The April workshop will probably be on the third Sunday as the 12th is Easter Sunday.



On Wednesday, February 19, we are planning a **Chili Cook-off** for Wednesday Night Supper. If you would like to enter your favorite Chili recipe, contact Laurie Mitchell by February 12. Let her know that you are planning to bring your chili and how many servings it makes. Have the warmed chili to the church by 5:30 pm that afternoon. There will be a prize for the favorite chili. Everyone at dinner will have an opportunity to vote.

SBPC Annual Women's Retreat Listening to God

Saturday, February 22, 2020

8:45 a.m. to 2:30 p.m.

Spring Branch Presbyterian's Fellowship Hall

with Rev. Mary D. D'Alessio

Mary is passionately interested in sharing the Good News of Jesus Christ, the spiritual formation of God's people, and Christian healing. After retiring from the PC(USA) in 2016, Mary continues to serve through the many opportunities God brings her way.



The retreat is sponsored by the Faith Development team. Breakfast snacks and lunch prepared by Kay Craig and Betty Magnuson. Cost is \$ 15. RSVP to Carol Davis by February 17; cash or checks made to Carol Davis ; give to her at church or mail to her at 2515 Cezanne Circle, Missouri City, TX 77459.



The Gathering Place Some of the Fun We Have Had Lately

The Gathering Place (TGP) met on Monday, December 16th in the Fellowship Hall. We celebrated Christmas by playing Reindeer Games, creating beautiful ornaments to take home, lunching on ham with homemade scalloped potatoes and brownies with peppermint ice cream, and were entertained with a sing-a-long accompanied by Dick Slover and Joan Belk.

On Monday, January 20th, we celebrated the International Month of Flowers by creating tissue flowers and planting our own to take home and nurture. The Kitchen crew served us a yummy Mexican lunch and we had the Sunshiner's Band to entertain us. Later, we played a rousing game of stick ball before we all went home for a nap.

The Gathering Place is an ecumenical partnership with CarePartners® which provides memory care activities, lunch and a respite for caregivers of people with dementia. For more information, please snag a brochure from the pews in the Sanctuary.

This month, on February 17th, we will celebrate Mardi Gras. Come and join the fun! New volunteers are always welcome! If you can spare one Monday of the month (third Monday) from 10 AM to 1 PM, we would love for you to join us. It is a fun and rewarding experience!

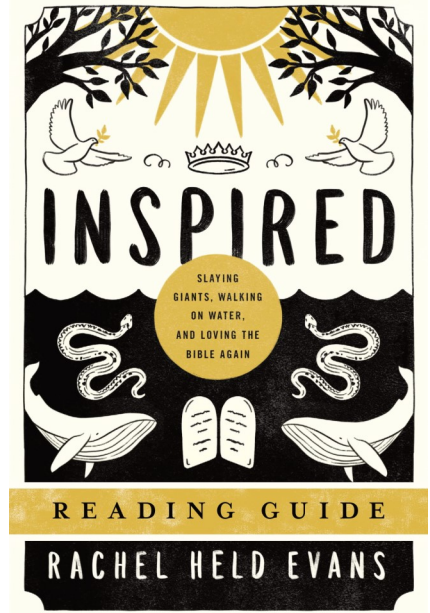
We send a special thank you to those who have helped each month or when able over 2019. They are Sylvia Argyriou, Jacquie Ballesteros, Joan Belk, Dayshayia Bishop, Anne Brewin, Charlie Craig, Kay Craig, Ken and Linda Crawford, Carol Davis, Sarah Dikeman, Margaret Ford, Luna Lassiter, Matt Lassiter, Betty Magnuson, Jennifer Miller, Victoria Miller, Patti Nanney, Marguerite Priest, Lisa Schultz, Jani Shepard, Dick Slover, Jeannie Stockton, Barbara Tremble, Web Trevathan, Kaitlenn Turney, Madelynn Turney, Miriam Vyles, Patti Walsh and Miguel Carlin.

**MARDI
GRAS!**



Messy Church is Thursday, February 6th at 5:30pm in the Fellowship Hall. Please make plans to join us! Our theme this month is *Do Unto Others*, and we'll be exploring these topics: Valentine's, Bullies, and Kindness. We hope to see you there!

The next book discussion, sponsored by Faith Development, will be on "Inspired: Slaying Giants, Walking on Water, and Loving the Bible Again" by Rachel Held Evans, published in 2018. "If the Bible isn't a science book or an instruction manual, then what is it? What do people mean when they say the Bible is *inspired*?" "When the author found herself asking these questions, she began a quest to better understand what the Bible is and how it is meant to be read. What she discovered changed her and it will change you too. She examines some of our favorite Bible stories and possible interpretations, retelling them through memoir, original poetry, short stories, soliloquies, and even a short screenplay. Undaunted by the Bible's most difficult passages, Evans wrestles through the process of doubting, imagining, and debating Scripture's mysteries. The Bible, she discovers, is not a static work but is a living, breathing, captivating and confounding book that is able to equip us to join God's loving and redemptive work in the world."



A one-time discussion of this book will be arranged at the convenience of those participating, probable in early April. We will have a one-time discussion after folks have had a chance to read the book and have it planned when they would like to meet, probably *not* during the Sunday School hour. Get 1-2 or more friends to order the book to share reading before our discussion. It's available in 225-page paperback (new or used) and on Kindle from Amazon. If you would like to be a part of a group order using Amazon Prime, contact Carol Davis.

*Save
the
Date!*

SCOUT SUNDAY

February 16



Congratulations to Alexander Shalen Allen X, Vance Thomas Clark, Walter McKennon Denney IV, Sean William Kennedy, George Dare Lovett IV, and Matthew Kemp Tomlinson on receiving the rank of Eagle Scout on Saturday, January 25th at Spring Branch Presbyterian Church. Until now, the most Scouts that have been awarded the Rank of Eagle Scout on one occasion by Troop 478 was five in 1982.

Save the date: February 24th at 6:30pm: Cub Scouting at Spring Branch Presbyterian Church!

We are excited to announce that we are chartering a new Cub Scout Pack to serve children and build on the legacy of Scouting at Spring Branch Presbyterian. Cub Scout Pack 478 will help the next generation develop in character, leadership, physical fitness, citizenship, and spiritual life. Cub Scouting is a fun-filled, adventure-driven family program for children from Kindergarten through 5th Grade.

To learn more, interested families are invited to join us in the Fellowship Hall on Monday, February 24th from 6:30 pm to 7:30 pm for a fun-filled Scout Night.



Dear Spring Branch Presbyterian Church,

Thank you for being a loving Christian community for so many years. Thank you so much for the love and friendship you afforded mom for so many years. She loved you all.

Sonya Weisser, Sarah Savage,
and Sherry Flores



Thank you to the congregation for all of your prayers, cards, and support during the passing of Gary's mother.

The Mitchell Family



Congratulations to the entire Powell Family on the birth of Sarah and Daniel's son, Clayton Glen Powell. He shares the same initials with his grandfather, Cliff.

Clayton was born on Monday, January 20th,

weighing 6lbs. 15oz. and 18-3/4" long.



BEAUTIFY THE CHURCH

INTERESTED in beautifying the sanctuary on Sunday mornings while honoring a loved one or commemorating a special occasion? The Flowers Sign-Up Calendar is located in the Narthex! **The cost per arrangement is \$65.00. Special arrangements vary and should be requested EARLY!** Checks should be written to SBPC and given to Jorida in the Church Office.





SMALL TALK



FEBRUARY - SPRING BRANCH PRESBYTERIAN ACADEMY - 2020

This past joyous Christmas holiday quickly zipped by...

Our kids and staff

had a jolly old time with a visit with

our dear Santa Claus.



Valentine's Day is a sweet one.
Giving out cards and receiving them is so fun.
Flowers and hearts are the decorations,
A day to show you care is the reason for celebration!
Chocolate and candy are sweet presents too,
I love Valentine's Day, how about you?



Go Texan Rodeo



Rodeo week at the Academy begins Monday Feb. 24th. Come on over and check out our cute little partners decked out in their western attire.

GIVE BLOOD

.ORG

Spring Branch Presbyterian

**Sunday,
March 1st
8:30 am - 12:30 pm
Fellowship Hall
1215 Campbell Rd**

**To schedule an appointment,
contact Ashley Powell
(979) 571-2499
ashleycrawford161@gmail.com**

Sponsor Code: 0324

**Gulf Coast Regional
Blood Center**
Commit for Life.®

EAT. DRINK. BRING I.D.



Richard, donor and volunteer



RODEO JOHN KNOX
Saturday, February 22, 2020
6:30 PM
American Legion Hall
3105 Campbell Rd.

Tickets are on sale for our Rodeo John Knox BBQ Dinner and are \$20 per person for 13 years and older, \$10 per person for 4 to 12 years old. On the menu:

Choice of: Pulled Pork or Pulled Chicken
Smoked Sausage
Twice Baked Potato Salad
Charro Beans
Green Salad
Bread
Cobbler

Live Auction Items:

- Wine Class for up to 16 people. Includes wine, stemware, light snacks. Value: \$800
- 2 or 3 night get-away to Walnut Canyon Cabins in Fredericksburg, TX. A peaceful setting where you can enjoy getting away from it all. Although the cabins are secluded, they're not too far if you'd like to shop and visit the wineries or restaurants of Fredericksburg. Value: \$425 (this package will include some gift cards to HEB as well)
- Dinner Party for Six—Casual or fancy. This dinner includes 2 bottles of wine and a 3—4 course meal. We will come to your home, decorate the table, serve you, and clean up afterward. Value: \$400—600
- Dessert of the Season—four made-from-scratch desserts delivered to you—one each for Spring, Summer, Fall and Winter. Value: \$200

Wine Pull—Red, white or sparkling—You choose from one of these categories and you'll receive a bottle of wine guaranteed to be valued at \$10 minimum. Each pull \$10.00.

Raffle—Dining Around the World—Tickets are \$2 each or 3 for \$5. First prize is a package of area restaurant gift cards valued at \$350-\$500. There will be at least one 2nd prize as well.

Silent Auction—includes great baskets such as a “Go-Green Basket,” Kitchen and Signed Cookbook Basket, Grilling/BBQ Basket, Just for Men Basket and MORE!



SBPC Scholarship applications are now available for interested students. Completed applications are due May 1 for the year applying and should be turned in to Sarah Dikeman for the women's scholarship and Ken Crawford for the men's scholarship.

**Spring Branch Presbyterian Church
Women's/ Men's Scholarship Application
2020-2021 Academic Year**

Name: _____ DOB _____

Permanent Address: _____

School Address: _____

Phone cell: _____ home: _____

Are you employed: FT____ PT____ Work Study____ N/A _____

Name of College, University, or Technical School: _____

Level: Freshman _____ Sophomore _____ Junior _____
Senior _____ Post- Grad _____

Degree Program: _____

Years Attended: _____ FT/ PT student _____

GPA: _____ Honors Program: _____ Year of Graduation: _____

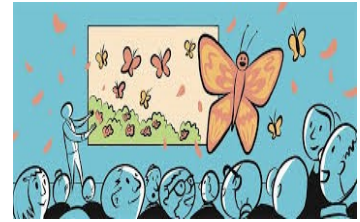
On a separate piece of paper, in paragraph form, please describe:

1. Your goals
2. Extracurricular activities
3. Community service
4. How your faith and belief in God affects your studies
5. Your membership and involvement in Spring Branch Presbyterian Church
6. Use of Scholarship money
7. Any other information you'd like to share
8. Optional Photograph

**Applications are due the 1st of May for the year applying and should be turned in to Sarah Dikeman for the Women's Scholarship and Ken Crawford for the Men's Scholarship. Applicant must be enrolled or accepted at a college, university, technical school, or certification program. Scholarships will be awarded in the summer of the year applying. Recipient must maintain a minimum GPA of 2.0/C average. Applicant must be an active member in good standing of Spring Branch Presbyterian Church. Reapplication may be made each year beginning January 1.

Behind the Scenes...

Helpers are needed for compiling the lovely Sunday morning **PowerPoint** presentations we use in worship! Plenty of spots are available, training is provided, and it can be done from home, as it is not an overly difficult process. Please contact Patty Blome if you have any questions or are willing to help out!



If you are cleaning out closets and come across gently used toys, such as puzzles, blocks, large Legos or other stacking blocks, toys, cars, trucks, animals too large to be swallowed, or other manipulative play toys, please donate them in the box at the Church office for use in either the Playground or Free Play Zone (for suppers in the Fellowship Hall)! Thank You!!



PARLOR DESIGN

The Property Group is looking for a dynamic group of people who are willing and able to help give the parlor a face lift! If you are interested and it is right up your alley, please contact Lisa Merritt at fake_momm@yahoo.com or 713-775-0033.

Handbells

Do you have hands for a joyful noise rather than a voice - then Handbells wants YOU! Our Handbell Choir rehearsals are after the Sunday worship service. Please see Megan Hogg if you would like to join. Nursery care is provided.

FRIDAY EMAIL ANNOUNCEMENTS

Would you like to receive our weekly announcements via email every Friday? Sign-up by visiting our Church website: www.springbranchpres.org – **CLICK on “sign up for our Mailing List”**

Church’s Prayer Chain List?

A Prayer Chain Email is sent to our “prayer warriors” when we receive word about someone in need.

Pastors Bible Study

Calling all Members, Friends, and Academy Parents

Please join us for a Pastor's Bible Study every Tuesday at 11:00 a.m. in the Conference Room.

As part of our time together, we will be exploring the passages that will be used in Worship on the following Sunday morning.

Additional Church T-shirts have arrived!



There are two color options available: Columbia Blue with Navy Text, or Royal Blue with White Text. Get both shirts in your size, or pick the color that you would prefer! The cost of the shirts are only \$10.00/each. Find Ethan on Sunday mornings, at Wednesday Night Supper, or by email at ethan@springbranchpres.org to reserve and/or receive your shirt(s).

Payments can be given to Jorida in the Church Office, or placed in the offering plate on Sundays, and notated for T-shirts.

Happy
Birthday!

happy
Birthday
To you

Sarah Fake	2/1
Clara Dikeman	2/2
James Daley	2/3
Silvia Argyriou	2/4
Victoria Kissinger	2/4
Cali Alegria	2/6
Stephen Earnest	2/7
Loretta Pittman	2/8
Logan Balli	2/9
Fonda Blair	2/10

Daniel Powell	2/10
Merveilles Massamba	2/13
Dr. Doris Wright	2/13
Eric Purfurst	2/14
Lynn Dudinsky	2/15
Beth Mizwa	2/15
Kayla Mizwa	2/18
Dianne Bigelow	2/21
Amelia Hazel Laverty	2/27






Happy Anniversary!

Barbara and Don Tremble	2/5
Wayne and Carol Summers	2/14

Church Calendar, Outside SBPC Reservations

Feb 2020 (Central Time - Chicago)

Sun	Mon	Tue	Wed	Thu	Fri	Sat
26	27	28	29	30	31	1
<p>9:30am - Sunday School</p> <p>10:50am - Worship</p> <p>12:15pm - Handbells</p>	<p>3:30pm - WOW (S)</p> <p>5:45pm - Yoga (CR)</p> <p>6pm - Basketball (GP)</p> <p>6pm - PW Unwind</p> <p>6:30pm - Sisters of</p> <p>7:30pm - Boy Scouts</p>	<p>9:15am - Cong. Care Mtg.</p> <p>10am - Flexercise (GP)</p> <p>11am - Pastor's Bible Study</p> <p>6:30pm - Spec. Olympics -</p>	<p>9:30am - PW Moderator</p> <p>10:15am - PW Board</p> <p>6pm - Wed. Night Supper</p> <p>7pm - Choir</p>	<p>10am - Flexercise (GP)</p> <p>5:30pm - Messy Church</p> <p>5:45pm - Yoga (CR)</p> <p>6pm - Fairbees Square</p>	<p>9am - Planning for the</p> <p>1:30pm - Spec. Olympics -</p> <p>6pm - CENTI Church Service</p>	<p>1:30pm - Spec. Olympics -</p> <p>6pm - CENTI Church Service</p>
2	3	4	5	6	7	8
<p>9:30am - Sunday School</p> <p>10:50am - Worship</p> <p>12:15pm - Handbells</p> <p>12:30pm - Monthly</p> <p>1pm - Sunday Craft</p>	<p>3:30pm - WOW (S)</p> <p>5pm - Academy Board</p> <p>5:45pm - Yoga (CR)</p> <p>6pm - Basketball (GP)</p> <p>6:30pm - Sisters of</p> <p>7:30pm - Boy Scouts</p>	<p>10am - Flexercise (GP)</p> <p>11am - Pastor's Bible Study</p> <p>6:30pm - Fellowship Grp</p> <p>6:30pm - Spec. Olympics -</p>	<p>9:30am - PW Circle</p> <p>6pm - Wed. Night Supper</p> <p>6:30pm - Arc of SB/M Board</p> <p>6:30pm - Team Leader</p> <p>7pm - Choir</p> <p>7pm - Property Meeting (P)</p>	<p>10am - Flexercise (GP)</p> <p>5:45pm - Yoga (CR)</p> <p>6pm - Fairbees Square</p>	<p>7pm - Parent's Night Out</p> <p>Happy Valentine's Day</p> 	<p>8am - Presbyterian Men</p> <p>1:30pm - Spec. Olympics -</p> <p>6pm - CENTI Church Service</p>
9	10	11	12	13	14	15
<p>9:30am - Sunday School</p> <p>10:50am - Worship</p> <p>12:15pm - Handbells</p> <p>12:30pm - Monthly</p> <p>1pm - Sunday Craft</p>	<p>3:30pm - WOW (S)</p> <p>5pm - Academy Board</p> <p>5:45pm - Yoga (CR)</p> <p>6pm - Basketball (GP)</p> <p>6:30pm - Sisters of</p> <p>7:30pm - Boy Scouts</p>	<p>10am - Flexercise (GP)</p> <p>11am - Pastor's Bible Study</p> <p>6:30pm - Fellowship Grp</p> <p>6:30pm - Spec. Olympics -</p>	<p>9:30am - Zip Trip</p> <p>6pm - Wed. Night Supper</p> <p>7pm - Choir</p>	<p>10am - Flexercise (GP)</p> <p>5:45pm - Yoga (CR)</p> <p>6pm - Fairbees Square</p>	<p>7pm - Parent's Night Out</p> <p>Happy Valentine's Day</p> 	<p>8am - Presbyterian Men</p> <p>1:30pm - Spec. Olympics -</p> <p>6pm - CENTI Church Service</p>
16	17	18	19	20	21	22
<p>Scout Sunday</p> <p>9:30am - Sunday School</p> <p>10:50am - Worship</p> <p>12:15pm - Handbells</p>	<p>10am - The Gathering Place</p> <p>3:30pm - WOW (S)</p> <p>5:45pm - Yoga (CR)</p> <p>6pm - Basketball (GP)</p> <p>6:30pm - Sisters of</p> <p>6:30pm - Worship Meeting</p> <p>7:30pm - Boy Scouts</p>	<p>10am - Flexercise (GP)</p> <p>11am - Pastor's Bible Study</p> <p>6pm - Finance Group Mtg</p> <p>6:30pm - Spec. Olympics -</p> <p>8pm - Horizon's Bible Study</p>	<p>9:30am - Zip Trip</p> <p>6pm - Wed. Night Supper</p> <p>7pm - Choir</p>	<p>PresPress Articles DUE</p> <p>10am - Flexercise (GP)</p> <p>5:45pm - Yoga (CR)</p> <p>6pm - Fairbees Square</p>	<p>1pm - Setup for Faith Dev.</p> <p>8:45am - Faith Dev.</p> <p>11am - Hot Meals</p> <p>1:30pm - Spec. Olympics -</p>	<p>8:45am - Faith Dev.</p> <p>11am - Hot Meals</p> <p>1:30pm - Spec. Olympics -</p>
23	24	25	26	27	28	29
<p>9:30am - Sunday School</p> <p>10:50am - Worship</p> <p>12:15pm - Handbells</p>	<p>3:30pm - WOW (S)</p> <p>5:45pm - Yoga (CR)</p> <p>6pm - Basketball (GP)</p> <p>6:30pm - Cub Scout</p> <p>6:30pm - Sisters of</p> <p>7:30pm - Boy Scouts</p>	<p>10am - Flexercise (GP)</p> <p>11am - Pastor's Bible Study</p> <p>6:30pm - Spec. Olympics -</p> <p>7pm - Session @</p>	<p>Ash Wednesday</p> <p>9:30am - Happy Hands (CR)</p> <p>6pm - Wed. Night Supper</p> <p>7pm - Choir</p> 	<p>10am - Flexercise (GP)</p> <p>5:45pm - Yoga (CR)</p> <p>6pm - Fairbees Square</p>	<p>10am - Flexercise (GP)</p> <p>5:45pm - Yoga (CR)</p> <p>6pm - Fairbees Square</p>	<p>1:30pm - Spec. Olympics -</p>



Sponsored By:

Spring Branch Presbyterian Church
1215 Campbell Road
Houston, Texas 77055
(713) 464-7659
www.springbranchpres.org

relationships matter



GOD • ONE ANOTHER • WORLD



SBPC will be participating in the **30th Annual Souper Bowl of Caring** on **Sunday, February 2nd** to help tackle hunger in Houston.

Please remember to bring your canned food items or monetary donation on Sunday, February 2nd. Thank you for your support!