

PRES PRESS



MARCH

2022

Spring Branch Presbyterian Church
1215 Campbell Rd | Houston, TX 77055

relationships matter
GOD • ONE ANOTHER • WORLD 



Many Christians, both protestant and catholic, observe a season called Lent that spans from Ash Wednesday to Easter Sunday. The season of Lent is a time of prayer, fasting and self-examination in preparation for the celebration of the resurrection of the Lord at Easter.

Lent is a period of 40 days — like the flood of Genesis, Moses' sojourn at Mount Sinai, Elijah's journey to Mount Horeb, Jonah's call to Ninevah to repent, and Jesus' time of testing in the wilderness.

But if you look at a calendar, you will find there are more than 40 days that span from Ash Wednesday to Easter Sunday. That's because Sundays are not counted, as every Lord's Day is a celebration of the resurrection of Jesus Christ.

In the early church, Lent was a time of preparation for the celebration of baptism at the Easter Vigil. In many faith communities it remains a time to equip and nurture candidates for baptism and confirmation, and to reflect deeply on the theme of baptismal discipleship.

Lent gives us an opportunity to step back and pause to recognize our humanity and sinful nature. The Lenten season reminds us of our need for a Savior as a time to reflect and repent for our shortcomings. Lent prepares us as we approach Good Friday and Easter with thanksgiving for the grace and mercy shown to us.

And God showed his love for us by sending his only Son into the world, so that we might have life through him. – 1 John 4:9 (GNT)

Missions of the Month

The “Mission of the Month” for March is BakerRipley. BakerRipley provides outreach services to underserved communities in the Greater Houston area and surrounding communities. In addition to community centers where clients receive ESL classes, immigration services, GED assistance, etc., they also provide Disaster Recovery support services, community Head Start schools, job and career development services, senior support services, and tax and financial support

services. Every day, BakerRipley is connecting hardworking families to opportunities to support their educational, financial, and civic aspirations. This belief extends from birth to older adults. BakerRipley Senior Services works directly with neighbors to create opportunities that honor their purpose and well-being. The Dementia Day Center provides a supportive environment where individuals with dementia can participate in purpose-filled, strength-based activities. Caregivers of older adults have the opportunity to access accurate information, education, and connect to others.



- ❖ Through BakerRipley's Workforce Solutions Initiatives Department, neighbors have had access to job coaching, training, and resources. 32% of customers that called the Workforce Solutions Department received a 20% higher paying job.
- ❖ 89% of neighbors who were employed obtained a 30% increase or higher in wages after participating in the program.
- ❖ In 2019, BakerRipley served 1,792 Adult Education Participants and 82% who tested made progress in learning English and other oral tests that were given.
- ❖ In 2019, BakerRipley helped complete 35,000 tax returns for our neighbors, which resulted in 55 million in tax refunds for low income families across the Houston Region.
- ❖ Through BakerRipley helping neighbors complete their tax returns, 3.8 million in legal fees were saved.



March Mission Updates & Opportunities

Souper Bowl of Caring Update – Thank you to everyone who participated in our Souper Bowl of Caring effort this year! We collected over 70 items of food and \$245 in monetary donations. All donations were taken to the Fair Haven Food Pantry.

February Blood Drive – Thank you to everyone who participated in our February Blood Drive. A total of 6 units were collected. Save-the-Date for our next Blood Drive on July 24th!

SBPC Hot Meals on Weekends – The current COVID-19 restrictions have made this service opportunity possibly more important than ever. The 4th Saturday of each month we look for individuals to deliver meals to shut-ins. We have 2 routes with about 14 people on each route, so we usually need a total of 4 volunteers each month. Please contact Lu Taylor if you are interested in volunteering to deliver meals one month. The Saturday for this month will be March 22nd.

Wednesday Night Supper

March 2 — Red Beans & Rice

Ash Wednesday

March 9 — Chili

March 16 — No Supper

(Spring Break)

March 23 — Sloppy Joes

March 30 — PW Taco Soup

All proceeds benefit the scholarship fund!



Taking reservations during the pandemic has helped us to reduce food waste in the kitchen and improved our meal planning. We plan to continue the reservation process, but will also take walk-ins as long as we have extra food to serve. If you would like to continue to take your meal home, please park and have someone come inside to the line to get your dinners to-go. Watch your email for placing orders!



Fellowship Meal

Prices for the supper are as follows:

Adults (age 13 & up) \$5.00

Children (ages 1-12) \$2.00

Family w/children ages 1-12 \$12.00

(immediate family only please)

To go plates \$5.00

We will continue to accept donations for the Fair Haven Food Pantry at WNS (non-perishable food items, cleaning supplies, paper products, and plastic grocery bags).

The Fellowship Committee welcomes anyone who would like to help with a dinner or volunteer any Wednesday in the kitchen! If you are interested in helping just once or on an ongoing basis, please contact Laurie Mitchell at galamitchell@comcast.net. The committee is happy to help support you in any way if you would like to take on a supper this year. We are always looking to try a new menu!

Let's Grow in God



Children's Sunday School Class

We will begin a Children's Sunday School Class on Sunday, March 20, at 9:30am in the Children's classroom in The Gathering Place.

We will meet the 1st and 3rd Sundays of each month to learn more about the stories in the Bible by having crafts, stories, games, and other fun activities.

The class is designed for elementary-age children, ages 5 to 10, but all are welcomed.

WE CAN'T
WAIT TO SEE
YOU

Pastors Bible Study



You are invited to attend Pastor's Bible Study with Kevin! The group gathers at 11:00 AM on Tuesday mornings. The Bible Study is now being offered both in-person and virtually. You may either join in-person at 11:00 AM in the Conference Room, or by Zoom using the information below. We hope to see you there!

Meeting ID: 897 7951 2452 | Password: 754888 | Zoom Link:

<https://us02web.zoom.us/j/89779512452?pwd=VU1VZVByeFI1MEwxNmxrR090S0JVQT09>



Presbyterian Women this Month

PW at a Glance



PW MODERATORS on 3/2 at 9:30 a.m. (Conference Room)

PW BOARD MEETING on 3/2 at 10:15 a.m. (Conference Room)

PW DAY CIRCLE meeting on 3/9 at 9:30 a.m. in the Conference Room.

If you would like to join the Day Circle by Zoom, please contact Carol Davis.

THE HORIZONS Evening Bible study using **ZOOM** will be on Monday, 3/14 at 7:00 p.m.

Lesson 7: www.springbranchpres.org/adult-education/presbyterian-women/what-my-grandmothers-taught-me

ZIP TRIP on 3/16 to Bayou Bend. Please RSVP to Marguerite Priest.

HAPPY HANDS will meet on 3/23 at 9:30 a.m. in the Gathering Place.

BIBLE STUDY BOOKS for 2021-2022 (*What My Grandmother's Taught Me*) are available in the Church Office, or can be picked up from Sarah Dikeman's House. The cost is \$10.

Bible Study Using Zoom: March 14th at 7:00 p.m.



Lesson 7 of *What My Grandmother's Taught Me* will be discussed by the group of women using Zoom on Monday, March 14th, at 7 p.m. Contact Sarah Powell at mrspowelltobe@yahoo.com to receive the Zoom invitation to join the meeting.

We saw beetles, butterflies and other bugs on the February ZIP Trip. We had so much fun watching several butterflies and moths come out of their chrysalis and cocoons. (Did you know that butterflies have chrysalis and moths have cocoons?) When they worked their wings out of their shells, the wings just pop open. It was fascinating to watch. We had a delicious lunch at Collina's Italian Café on the Katy Freeway. Dorothy Slover was able to join us for lunch and laughter.

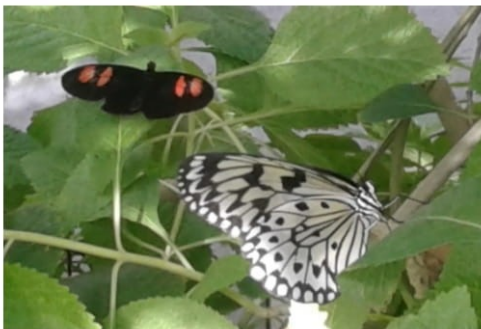
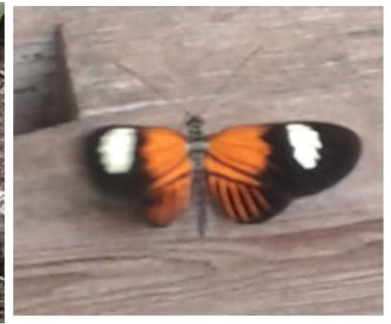


Join us on March 16th when we will ZIP to Bayou Bend to see the newly opened gardens and azaleas! All women of the church are invited. We will gather at the church at 9:30 am and travel together, with lunch at the Black Walnut following the tour.

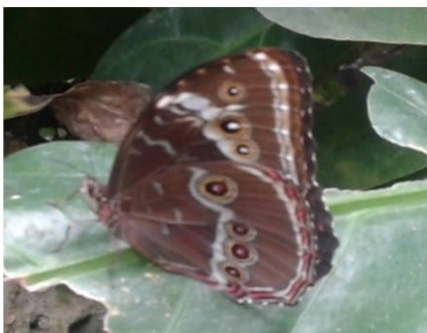
PW ZIP Trip -- We had so much fun at the . . .



Pictured are:
Jeannie Stockton,
Marguerite Priest,
Jacquie Ballesteros,
Sarah Dikeman, and
Patti Nanney



Cockrell
Butterfly
Center





Book Discussion Group

JUSTICE AND PEACE

- DISCUSS THE BOOKS WITH OTHERS VIA ZOOM
 - The J&P Book Discussion Group is open to all!
- DISCUSSION GROUP MEETS EVERY OTHER MONTH
 - Read and discuss any or all books that appeal to you. Registration will be needed to join the discussion on Zoom.
- RECEIVE STUDY GUIDES TO INFORM YOUR READING
 - Questions for discussion or reflection will be sent with your registration confirmation.

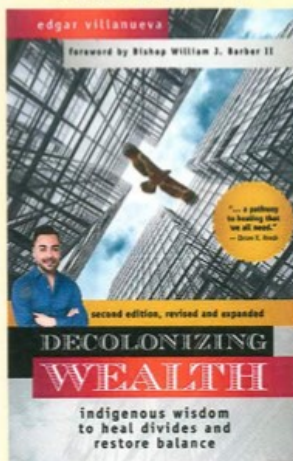


To register, scan the QR code with your smart phone or go to presbyterianwomen.org/justice.

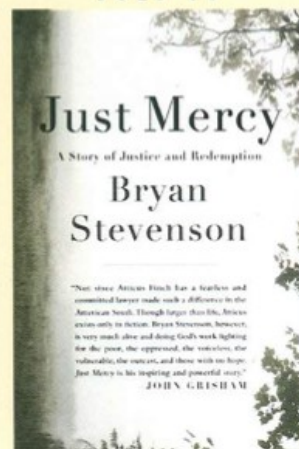
2022 Reading Selections

(6:30 PM – 8:30 PM Eastern Time)

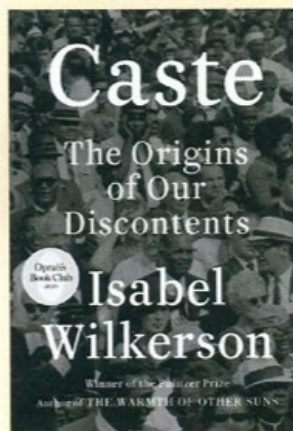
JANUARY 10



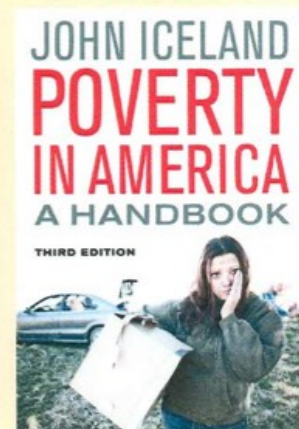
JULY 11



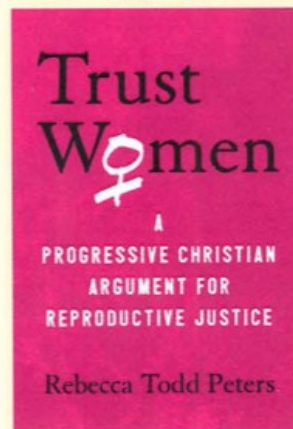
MARCH 14



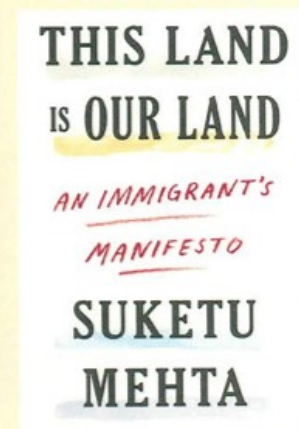
SEPTEMBER 12



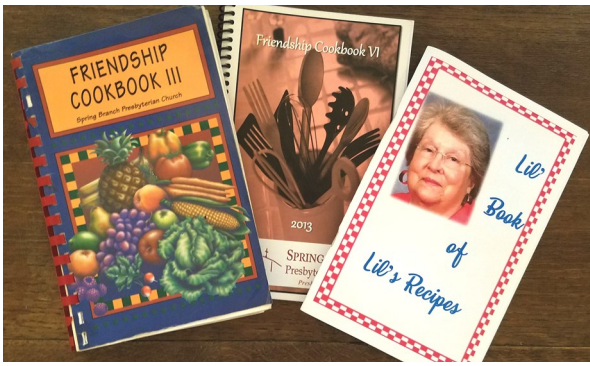
MAY 9



NOVEMBER 14



Selections are recommended reading by the Justice & Peace Committee of PW's Board of Directors.



FOR SALE

FRIENDSHIP COOKBOOKS (#3/#6) &

LIL'S RECIPES FOR SALE

FOR SALE \$5.00

STOP BY THE CHURCH OFFICE TO BUY ONE



Presbyterian Children's
Homes and ServicesSM

A graphic for the 'Forever Homes' luncheon event. It features a girl blowing a bubble, a family silhouette inside a large bubble, and the text 'Forever Homes' and 'Start Here'. The background is purple and teal with many smaller bubbles.

A luncheon event benefiting
the children of PCHAS

April 21, 2022
12:00 pm

Location:
**Junior League of
Houston**
1811 Briar Oaks Ln
Houston TX 77027

RSVP to
Table Hosts...
Sarah Dikeman, Marguerite
Priest, and Patti Nanney

One of our church's favorite events is back! **PCHAS** is hosting **The Annual Fundraising Luncheon** on **Thursday, April 21** that will showcase the life-changing work we are doing in our community. Our church will have three Table Hosts – Sarah Dikeman, Marguerite Priest, and Patti Nanney. In the next few weeks, one of these ladies will probably be contacting you to see if you would like to attend the luncheon, but feel free to contact them first. We always have so much fun, great fellowship, good food, and supporting a great charity.



SBPC Scholarship applications are now available for interested students!

Completed applications are due May 1 for the year applying and should be turned in to Sarah Dikeman for the women's scholarship and Ken Crawford for the men's scholarship.

**Spring Branch Presbyterian Church
Women's/ Men's Scholarship Application
2022-2023 Academic Year**

Name: _____ DOB _____

Permanent Address: _____

School Address: _____

Phone cell: _____ home: _____

Are you employed: FT____ PT____ Work Study____ N/A _____

Name of College, University, or Technical School: _____

Level: Freshman _____ Sophomore _____ Junior _____
Senior _____ Post- Grad _____

Degree Program: _____

Years Attended: _____ FT/ PT student _____

GPA: _____ Honors Program: _____ Year of Graduation: _____

On a separate piece of paper, in paragraph form, please describe:

1. Your goals
2. Extracurricular activities
3. Community service
4. How your faith and belief in God affects your studies
5. Your membership and involvement in Spring Branch Presbyterian Church
6. Use of Scholarship money
7. Any other information you'd like to share
8. Optional Photograph

**Applications are due the 1st of May for the year applying and should be turned in to Sarah Dikeman for the Women's Scholarship and Ken Crawford for the Men's Scholarship. Applicant must be enrolled or accepted at a college, university, technical school, or certification program. Scholarships will be awarded in the summer of the year applying. Recipient must maintain a minimum GPA of 2.0/C average. Applicant must be an active member in good standing of Spring Branch Presbyterian Church. Reapplication may be made each year beginning January 1.



NEWS YOU CAN USE



Don't forget to spring forward!

Daylight Savings Time begins on Sunday, March 13th. Don't forget to set your clocks ahead one hour on Saturday night.



We will have **Easter Lilies** again this year! Place your order now through Friday, April 15th. You can order by using the form in the Narthex or Church Office, contacting Ethan Mitchell at ethan@springbranchpres.org, calling the Church Office (713-464-7659), or using this [Google Form](https://forms.gle/Kde1Cj5N38jxjg2g6) (<https://forms.gle/Kde1Cj5N38jxjg2g6>).



The cost is \$10 each, and the payment can be mailed to the church office or placed in the offering box on Sunday mornings. The names of those being honored or remembered will be shared with the congregation on Easter Sunday morning.



Helpers are needed for compiling the lovely Sunday morning **PowerPoint** presentations we use in worship! Plenty of spots are available, training is provided, and it can be done from home, as it is not an overly difficult process. Please contact Ethan Mitchell or Patty Blome if you have any questions or are willing to help out!

Yoga Classes

Mondays and Thursdays at 6 pm in the Conference Room. Please bring a mat, towel, water bottle with water, and wear comfortable clothing.



Spring Branch Presbyterian is excited to welcome a new Girl Scout Troop! Troop 124182 is meeting on the 2nd and 4th Wednesday of each month, from 5:00-6:00 PM in the Girl Scout Room of the Gathering Place.

We would be glad to have you join us at our upcoming troop meetings to learn how to get involved. If you would like to get more information, or have any questions, please contact Karen Dikeman at kdikeman@gmail.com.



If you are interested in learning more about Boy Scout Troop 478, please join the Troop on Monday evenings from 7:30-8:30 PM at the Scout Hut. The Troop is always looking for new scouts to join!



SBPC Hot Meals on Weekends – The 4th Saturday of each month we look for individuals to deliver meals to shut-ins. We have 2 routes with about 14 people on each route, so we usually need a total of 4 volunteers each month. Please contact Lu Taylor if you are interested in volunteering to deliver meals one month.

Join us for Sunday School and Worship every Sunday at 9:30am and 10:50am, respectively! By attending, you are agreeing to follow the guidelines set forth for a safe return. The guidelines for Worship, Sunday School, and Church Events are available at: www.springbranchpres.org/covid-19-guidelines.

Every week, the service is being streamed live to the SBPC YouTube Channel: <https://www.youtube.com/channel/UCCK-MbvQ1TkJiUmDq1Psswg>.

Did you know that you can help the church by doing your grocery shopping at Randalls? By giving our Good Neighbor Number (1140) at the checkout line when you shop with your Remarkable Card, a portion of the proceeds will be contributed to the church.



BEAUTIFY THE CHURCH



Would you like to beautify the Sanctuary on Sunday mornings while honoring a loved one or commemorating a special occasion? The 2022 Flower Sign-Up Calendar is located in the Narthex. If you are currently worshiping from home, but would still like to sponsor flowers for a Worship Service, you may signup digitally by using this form: <https://www.signupgenius.com/go/30E084CABAC2BA1FA7-2022>, or to jorida.vakiari@springbranchpres.org. **The cost per arrangement is \$65.00. Special arrangements vary and should be requested EARLY!** Checks should be written to SBPC and mailed to the Church Office (Attn: Jorida) or placed in the offering plate on Sunday mornings.

FRIDAY EMAIL ANNOUNCEMENTS

Would you like to receive our weekly announcements via email every Friday? Sign-up by visiting our Church website, www.springbranchpres.org.

sign up for our
Mailing List

Church's Prayer Chain List?

*The email prayer chain is open all who would like to pray for those individuals in need of prayer. If you would like to be included in the email prayer chain as a prayer warrior or if you have a prayer request for an individual, contact swdmmd@dikeman.net. It is requested that prayers be for your **family members, or extended families and friends** who are in need of prayer.*

SBPC'S Store at Lands' End is back up and running!

SBPC Logo shirts are a great way to represent our church in the community.

Now SBPC has its own store: business.landsend.com/store/springbranchpres

From there you can choose from men's and women's polos, shirts, t-shirts, pullovers, jackets, totes, caps, aprons, and much more – all with the church logo!

You can choose from a multitude of colors as well as different thread colors for the logo.



To Order:

1. Go to: business.landsend.com/store/springbranchpres
2. Hover over *My Account* and select *Create Account* when the window pops up.
3. Select a category to start shopping, or use the search tool (Men, Women, Promotional Products).
4. Click on the item you would like to purchase and choose the color and size of the item. **Then select *Apply Logo(s)* to continue.**
5. Select the church logo (Logo 1). It will let you preview it on the left side of your screen.
6. If you would like to change the color of the Logo, select *Change Logo Color(s)* and pick from the provided options. Note: The church logo is made up of 3 separate pieces. To change the color, please make sure that you change the color of all 3 pieces of the Logo. You can see this in realtime in the preview on the left side of your screen.
7. Select the location where you would like the logo, and **click *Apply Logo*.**
8. Push *Add to Bag* and continue shopping or checkout.
9. Once your items are ready, they will ship to the address you provided when you setup your account. If you have not setup an account, please do so now so you do not lose your items.

Contact Ethan Mitchell at ethan@springbranchpres.org if you have any questions.



Happy Birthday






Noah Fake	3/1
Andrew Blair	3/2
Patti Walsh	3/3
Beverly Cook	3/6
David Fuller	3/6
Amy Cross	3/7
Gary Mitchell	3/7
Yolanda Martinez	3/8
C. Richard Nix	3/9
Sam Wright	3/9
Piper Dikeman	3/14

James Qualls	3/14
Madeline Powell	3/14
Linda Crawford	3/15
Austin Smith	3/15
Patty Blome	3/17
Edda Chirwa	3/17
Patti Nanney	3/18
Matthew Lassiter	3/20
Amber Murphy	3/22
Barbara Lanan	3/28
Ethan Mitchell	3/29



HAPPY ANNIVERSARY

Nick and Cyndi Ballesteros	3/27
Patti and Steve Nanney	3/30

Sun	Mon	Tue	Wed	Thu	Fri	Sat
27	28	1	2	3	4	5
		9:15am - Cong. Care Mtg. 10am - Flexercise (GP)	Ash Wednesday 9:30am - PW Moderator 10:15am - PW Board 12pm - Ash Wed. Service 6pm - WNS 6:45pm - Ash Wed. Service 6:45pm - Santa Iglesia Self- 	9am - Jessie's Bites 10am - Flexercise (GP) 6pm - Fairbees (GP) 6pm - Yoga (CR)	9am - Jessie's Bites 6:45pm - Santa Iglesia Self-	6pm - CENTI Church
6	7	8	9	10	11	12
1st Sunday in Lent 9:30am - Sunday school 10:30am - Called Session 10:50am - Worship 3pm - Memorial Service:	5pm - Academy Board 6pm - Basketball (GP) 6pm - Yoga (CR) 7:30pm - Boy Scouts (GP)	10am - Flexercise (GP) 11am - Pastor's Bible Study	9:30am - PW Circle 5pm - Girl Scouts (GP 2) 6pm - WNS 6:45pm - Santa Iglesia Self-	9am - Jessie's Bites 10am - Flexercise (GP) 6pm - Fairbees (GP) 6pm - Yoga (CR)	9am - Jessie's Bites 6:45pm - Santa Iglesia Self-	6pm - CENTI Church
13	14	15	16	17	18	19
2nd Sunday in Lent Daylight-Saving Time 9:30am - Sunday school 10:50am - Worship 	6pm - Basketball (GP) 6pm - Yoga (CR) 7pm - Horizon's Bible Study 7:30pm - Boy Scouts (GP)	10am - Flexercise (GP) 11am - Pastor's Bible Study 7pm - Mission Team	9:30am - Zip Trip 6:45pm - Santa Iglesia Self-	9am - Jessie's Bites 10am - Flexercise (GP) 6pm - Fairbees (GP) 6pm - Yoga (CR) 	9am - Jessie's Bites 2pm - Memorial Service: 6:45pm - Santa Iglesia Self-	8am - Presbyterian Men 6pm - CENTI Church
20	21	22	23	24	25	26
3rd Sunday in Lent PresPress Articles DUE 9:30am - Sunday school 10:50am - Worship	10am - The Gathering Place 6pm - Basketball (GP) 6pm - Yoga (CR) 7:30pm - Boy Scouts (GP)	10am - Flexercise (GP) 11am - Pastor's Bible Study 7pm - Session	9:30am - Happy Hands (GP) 5pm - Girl Scouts (GP 2) 6pm - WNS 6:45pm - Santa Iglesia Self-	9am - Jessie's Bites 10am - Flexercise (GP) 6pm - Fairbees (GP) 6pm - Yoga (CR)	9am - Jessie's Bites 6:45pm - Santa Iglesia Self-	11am - Hot Meals 6pm - CENTI Church
27	28	29	30	31	1	2
4th Sunday in Lent 9:30am - Sunday school 10:50am - Worship	6pm - Basketball (GP) 6pm - Yoga (CR) 7:30pm - Boy Scouts (GP)	10am - Flexercise (GP) 11am - Pastor's Bible Study	6pm - WNS 6:45pm - Santa Iglesia Self-	9am - Jessie's Bites 10am - Flexercise (GP) 5:30pm - HSRDC Quarterly 6pm - Yoga (CR) 7:30pm - Fairbees (GP)		



Sponsored By:

Spring Branch Presbyterian Church
1215 Campbell Road
Houston, Texas 77055
(713) 464-7659
www.springbranchpres.org

relationships matter



GOD • ONE ANOTHER • WORLD

THE
FORTY
DAYS
of LENT



RETURN
to the
LORD
YOUR
GOD